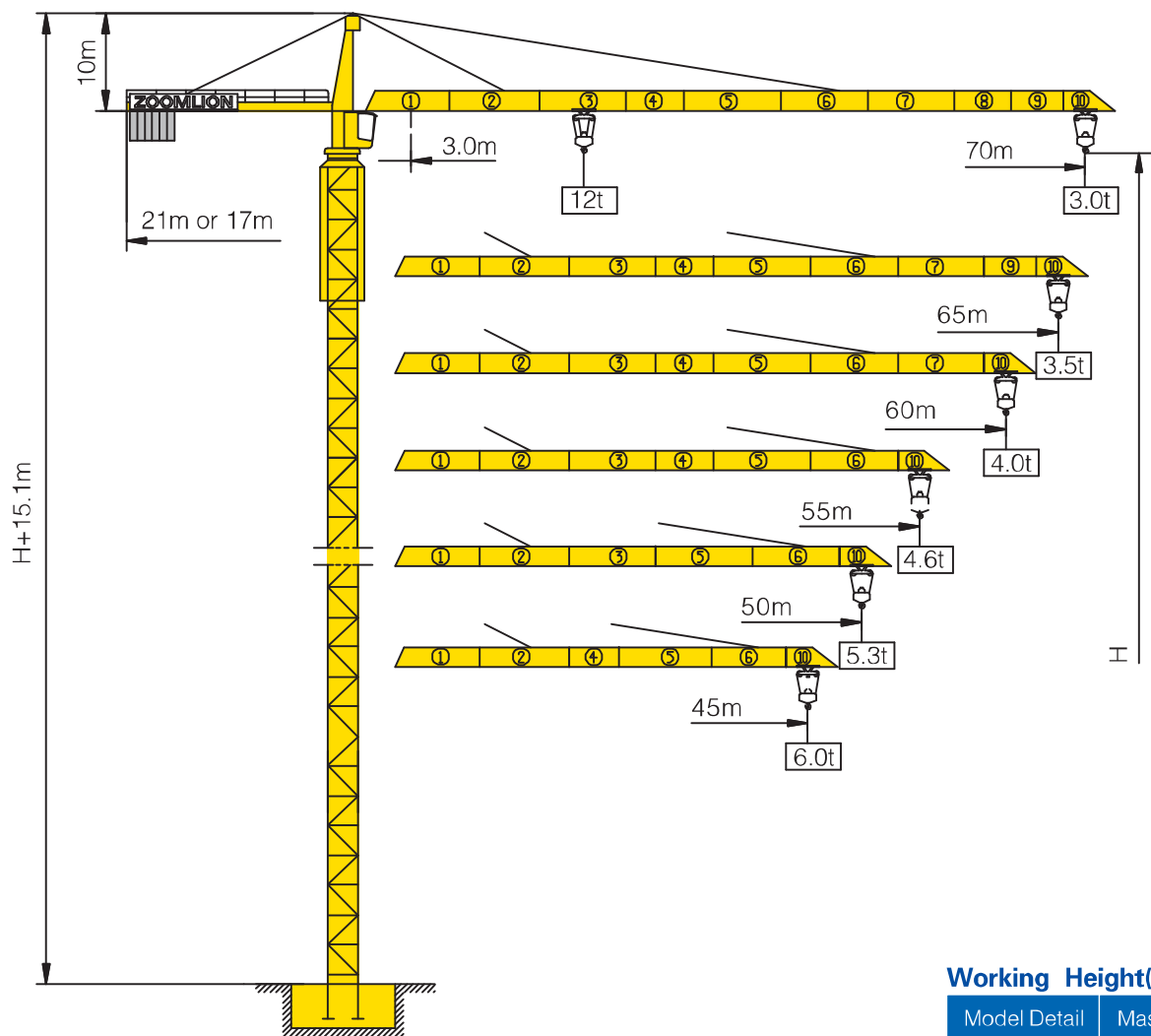




# TC7030B-12



## Counter-jib ballast

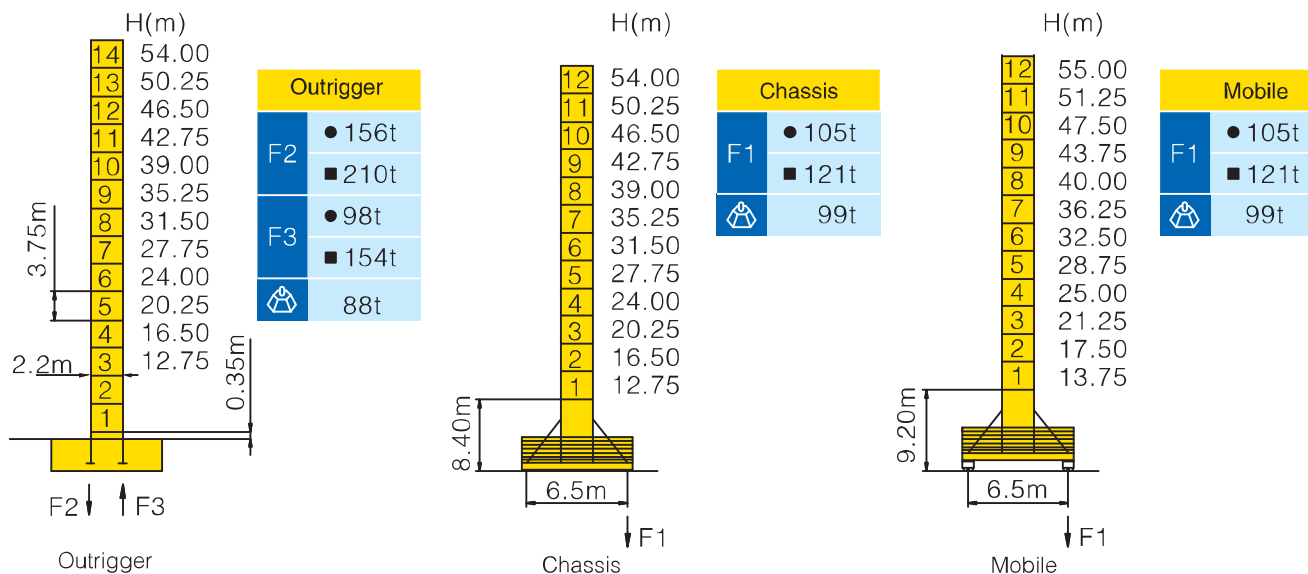
			(Kg)	PHZ3000	PHZ1000
70m	21m	21000	6	3	
65m	21m	20000	6	2	
60m	21m	19000	6	1	
55m	21m	18000	6	0	
50m	17m	21000	6	3	
45m	17m	19000	6	1	

## Working Height(m) @ Wall-tie Location(m)

Model Detail	Mast Code	Wall-tie #1	Wall-tie #2	Wall-tie #3	Wall-tie #4	Wall-tie #5
TC7030B-12	HQ1-C	84 @ 38	114 @ 68	144 @ 98	174 @ 128	200 @ 158

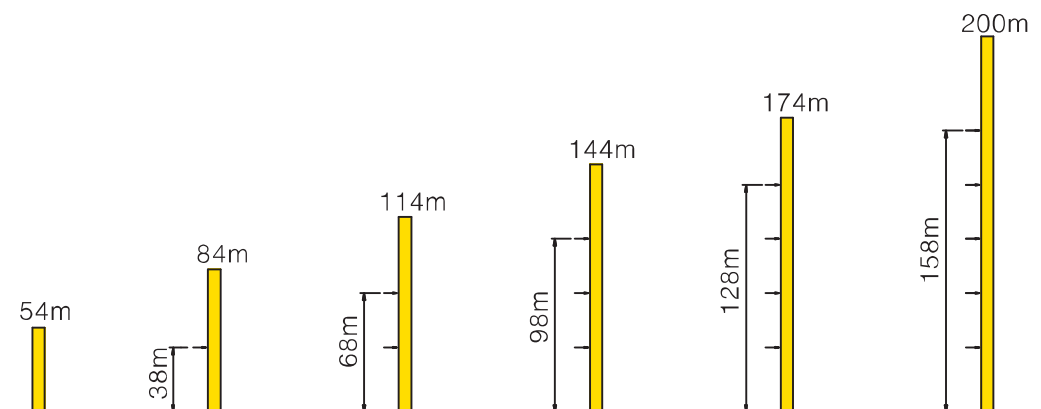


## Masts Reactions




● Reactions in service ■ Reactions out of service  
 ⚠ Without load and ballast with longest jib and maximum height  
 ⓘ For more erecting solutions, consult us!

## Anchorage





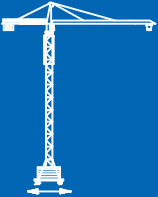
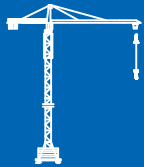



## Load diagrams

		Max.Capacity m/t	22.0	28.0	30.0	35.0	38.0	40.0	43.0	45.0	48.0	50.0	53.0	55.0	58.0	60.0	63.0	65.0	68.0	70.0
70m (R=71.1)	⌋	3.0—40.9m 6t	6.00						5.64	5.33	4.92	4.67	4.34	4.14	3.86	3.70	3.46	3.32	3.12	3.00
	⌋⌋	3.0—22.3m 12t	12.00	9.21	8.49	7.05	6.38	5.99	5.47	5.16	4.75	4.50	4.17	3.97	3.69	3.53	3.29	3.15	2.95	2.83
65m (R=66.1)	⌋	3.0—42.5m 6t	6.00						5.91	5.59	5.16	4.91	4.56	4.35	4.07	3.89	3.65	3.50		
	⌋⌋	3.0—23.2m 12t	12.00	9.64	8.89	7.39	6.69	6.28	5.74	5.42	4.99	4.74	4.39	4.18	3.90	3.72	3.48	3.33		
60m (R=61.1)	⌋	3.0—43.4m 6t	6.00						5.74	5.30	5.04	4.69	4.47	4.18	4.00					
	⌋⌋	3.0—23.7m 12t	12.00	9.88	9.11	7.58	6.86	6.45	5.90	5.57	5.13	4.87	4.52	4.30	4.01	3.83				
55m (R=56.1)	⌋	3.0—44.4m 6t	6.00						5.90	5.45	5.18	4.82	4.60							
	⌋⌋	3.0—24.2m 12t	12.00	10.10	9.35	7.79	7.05	6.62	6.06	5.73	5.28	5.01	4.65	4.43						
50m (R=51.1)	⌋	3.0—45.2m 6t	6.00						5.57	5.30										
	⌋⌋	3.0—24.6m 12t	12.00	10.40	9.55	7.96	7.21	6.77	6.20	5.86	5.40	5.13								
45m (R=46.1)	⌋	3.0—45.0m 6t	6.00																	
	⌋⌋	3.0—25.1m 12t	12.00	10.60	9.76	8.14	7.38	6.93	6.35	6.00										



## Mechanisms

		Hoisting		QP12100B		
	Slewing	HVV145B1.130A HVV145B2.130A				
	0 ~ 0.6 r/min	2 × 145 N.m				
	Trolleying	BP55B				
	0 ~ 75 m/min	5.5 kW				
	Travelling	ZAH52A-D ZCH52A-D				
	0 ~ 25 m/min	4 × 5.2 kW				
		 60 kW	V	⌋	3t	100 m/min
				⌋⌋	6t	50 m/min
			IV	⌋	6t	50 m/min
				⌋⌋	12t	25 m/min
		400m⊙ ( 5 layers ) ⊙ Consult us If overtop				
	380V(+10% - 10%) 50Hz		80.5+4 × 5.2 kW			

For more mechanisms optional, consult us!